

---

---

\_\_\_\_\_ 1597311389

---

201703150216 \_\_\_\_\_ 1702

---

E - m a i l \_\_\_\_\_ 29130415@qq.com

\_\_\_\_\_ 2019 5 5

\_\_\_\_\_ 2019 4 -2020 11

1

2

“ ”

3

16 A4

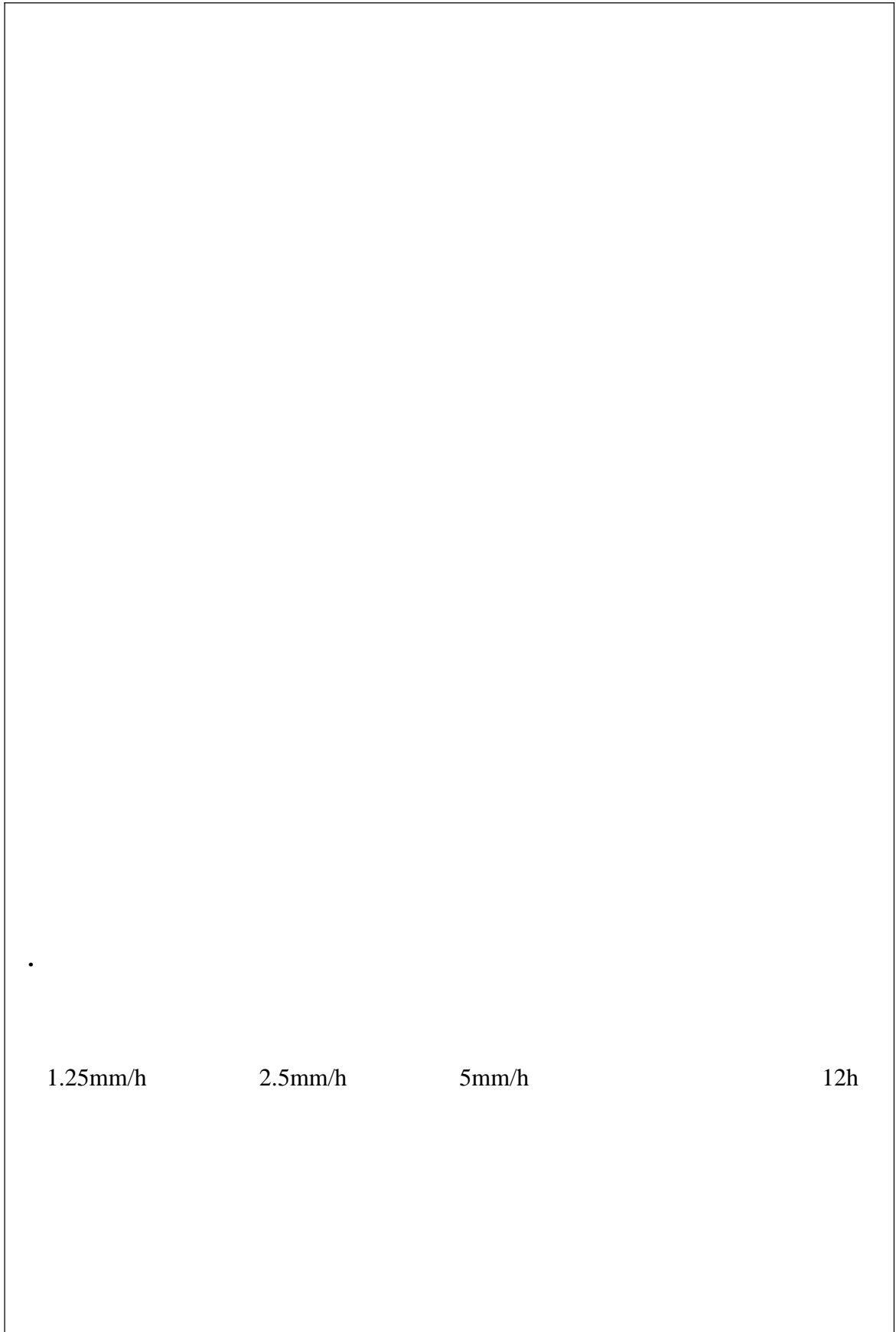
4

,

xxxx

	20000			2019 4 -2020 11	
					1998 12
	201703150216			:15973113895	
				:18390999363	
	1	“			
	2	” 2018.3	+	“	plus
	3	” 2018.5			2018.10
	1	“			
	2	” 2016.10 2018.09	“		”
		2018.05 2019.12			
		201703150216	1702		
		201703150217	1702		
		201708020718	1707		
		201708020726	1707		

i.



.

1.25mm/h

2.5mm/h

5mm/h

12h

**1.**

[1]

Ling<sup>[2]</sup>

Huat<sup>[3]</sup>

[4]

[5]

4

[6]

[7]

6

[8]

[9]

[10]

**2.**

Vanapalli [11-12]

1.5

[13] Fredlund

[14]

Vahedifard [15]

[16]

[17-18]

[19]

[20]

[1] . [J].  
2003 24(02):151-158.

[2] LingH, WuM. Centrifuge Modeling of Rainfall Induced Slope Failure[J]. American Geophysical Union Fall Meeting 2006.2006,12,466~479.

[3] Huat, B.B.K., Huat, Ali, F.H.J., Low, T.H. Water infiltration characteristics of unsaturated soil slope and its effect on suction and stability[J]. Geotechnical and Geological Engineering. 2006, 24(5): 1293-1306.

[4] . [J].  
2007 28(07):1391-1396.

[5] . [J].



- ( ) 2009 41(04):31-36.
- [6] . [J].  
2009 29(4):20-24.
- [7] . [J].  
2010 29(05):112-116.
- [8] . [D].  
2013.
- [9] . [J]. 2015  
23(04):616-623.
- [10] .  
[J]. 2015 36(11):3180-3186.
- [11] Vanapalli S, Sun R, Li X, et al. Bearing capacity of an unsaturated sand from model footing tests[J]. *Unsaturated Soils*. 2010: 1217-1222.
- [12] Vanapalli S K , Mohamed F M O. Bearing capacity and settlement of footings in unsaturated sands[J]. *International Journal of Geomate Geotechnique Construction Materials & Environment*, 2013, 5(1):595-604.
- [13] , , , . SQP  
[J]. , 2009, 28(S1): 3021–3028.
- [14] , , . [J].  
( ), 2010, 38(12):1736-1740.
- [15] Vahedifard F, Robinson J D. Unified method for estimating the ultimate bearing capacity of shallow foundations in variably saturated soils under steady flow[J]. *Journal of Geotechnical & Geoenvironmental Engineering*, 2016, 142(4): 04015095.
- [16] . [D]. , 2016.
- [17] , , . [J].  
, 2016, 45(05):937-943.
- [18] , , , . [J].  
, 2018, 37(05):1237-1251.
- [19] , , . [J].

[20] , . [J].

,2018,40(06):9-14.

1

2

**1.**

**1)**

0.5m×0.5m×1m

1.25mm/h

2.5mm/h

5mm/h

12h

1

**1**

---

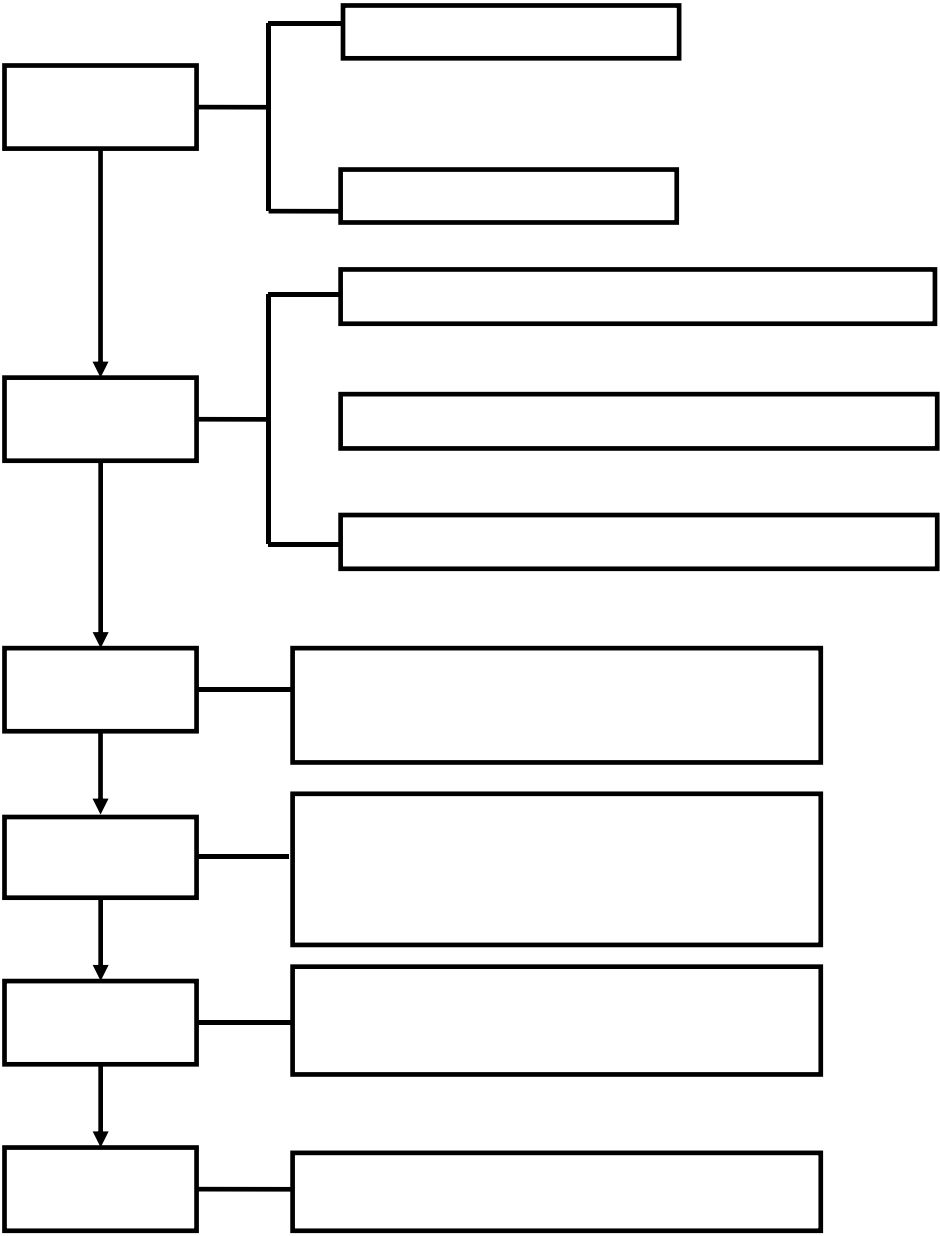
---

mm/h	1.25	2.5	5
h	12	12	12
mm	15	30	60

---

**2)**





1

2.

3.

1-2

1-2

2019 4-5

2019 6-8

2019 9-12

2020 1-3

2020 4-5

2020 6-8

2020 9-11

**1.**

2.

	<b>20000</b>		<b>12000</b>	<b>8000</b>
1.	<b>5000</b>		<b>2000</b>	<b>3000</b>
1				
2				
3				
4				
5	<b>5000</b>		<b>2000</b>	<b>3000</b>
2.				
3.	<b>6000</b>		<b>4000</b>	<b>2000</b>
4.	<b>9000</b>		<b>6000</b>	<b>3000</b>
	<b>20000</b>		<b>12000</b>	<b>8000</b>

